

Finishes

Actual finish appearance varies by manufacturer



Brushed Chrome



Brushed Stainless



Aluminum



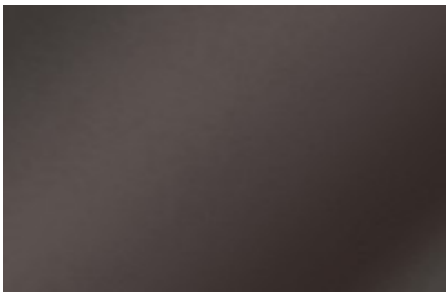
Polished Chrome



Polished Stainless



Zinc Plated



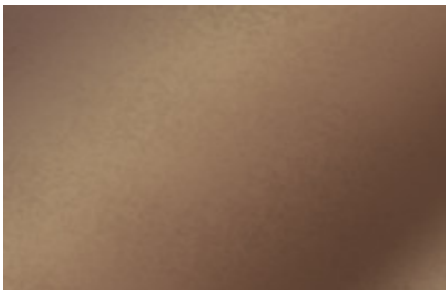
Dark Bronze



Polished Brass



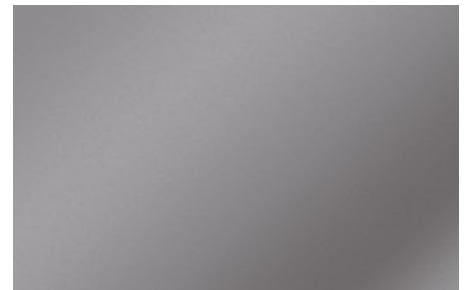
Clear



Medium Bronze



Brushed Brass



Prime Coat



Satin Bronze



Antique Brass



Black